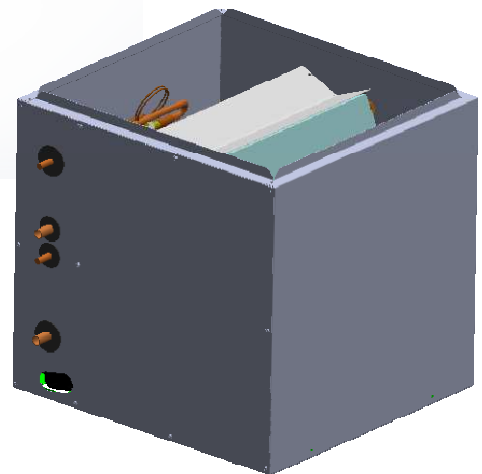
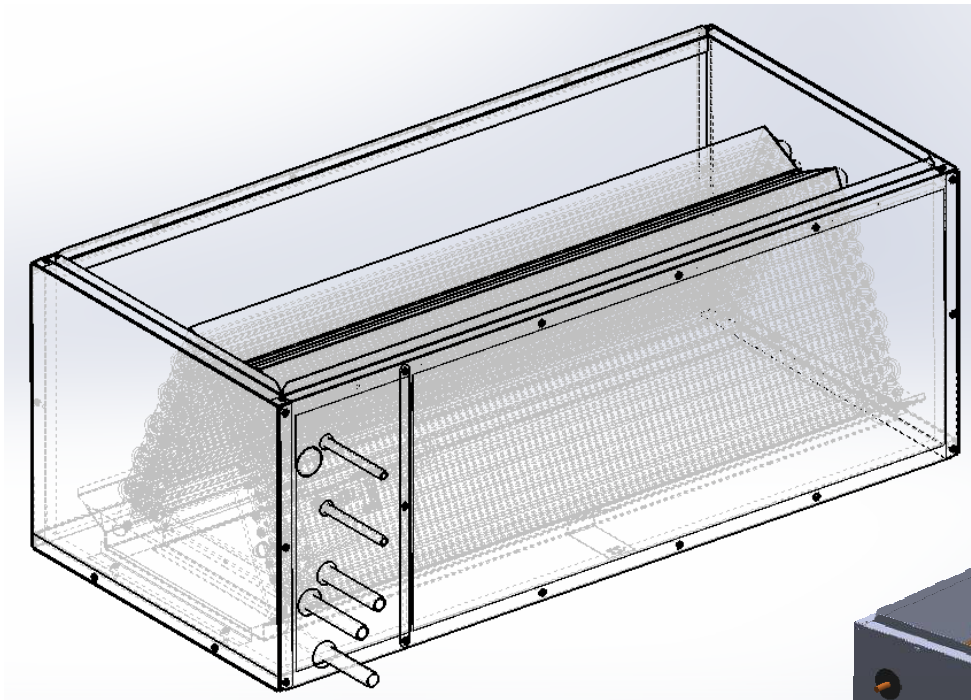


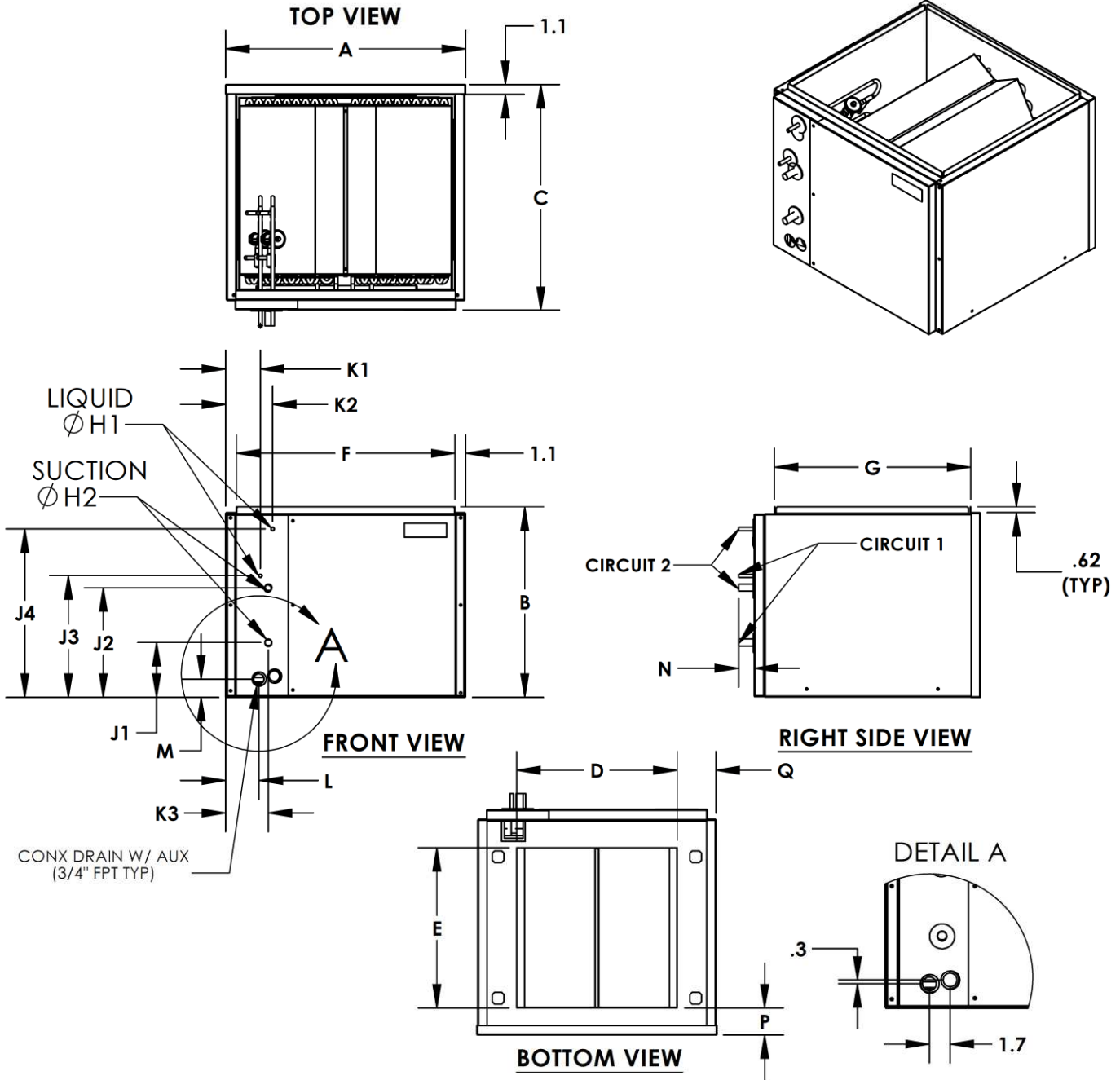


# VXF Series Cased & Uncased DX Cooling Coils

Product Submittal

## VXF Series





**SINGLE CIRCUIT COILS**

UNIT	WIDTH	HEIGHT	DEPTH	RETURN DUCT				SUPPLY DUCT		CONN SIZE (OD)		CONN LOCATION - SUCTION			CONN LOCATION - LIQUID			DRAIN LOCATION			CONN LENGTH
				A	B	C	D	E	Q	P	F	G	H1	H2	J1	J2	K3	J3	J4	K1	
VXF08	22.5	16.7	23.9	13.4	17.1	4.6	2.3	20.4	20.7	0.375	0.750	5.1	N/A	4.7	N/A	13.4	N/A	4.7	3.9	2.0	1.7
VXF12	22.5	16.7	23.9	13.4	17.1	4.6	2.3	20.4	20.7	0.375	0.750	5.1	N/A	4.7	N/A	13.4	N/A	4.7	3.9	2.0	1.7
VXF16	25.4	20.3	24.1	17.1	17.1	4.2	2.9	23.3	20.9	0.500	0.875	5.8	N/A	4.5	N/A	16.6	N/A	4.5	3.5	2.0	1.9
VXF20	25.4	24.2	24.1	17.1	17.1	4.2	2.9	23.3	20.9	0.500	1.125	5.7	N/A	3.7	N/A	19.9	N/A	3.7	3.5	2.0	2.2

**DUAL CIRCUIT COILS**

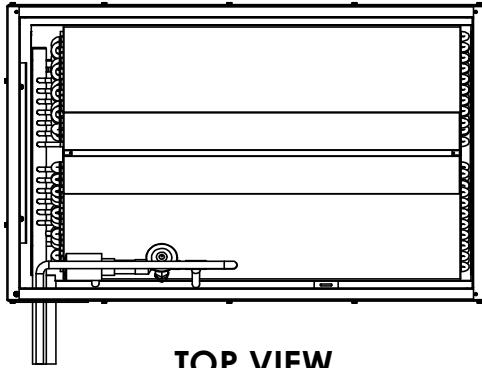
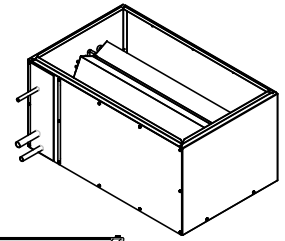
UNIT	WIDTH	HEIGHT	DEPTH	RETURN DUCT				SUPPLY DUCT		CONN SIZE (OD)		CONN LOCATION - SUCTION			CONN LOCATION - LIQUID			DRAIN LOCATION			CONN LENGTH
				A	B	C	D	E	Q	P	F	G	H1	H2	J1	J2	K3	J3	J4	K1	
VXF08	22.5	16.7	23.9	13.4	17.1	4.6	2.3	20.4	20.7	0.375	0.750	5.1	7.6	4.7	10.7	13.4	4.7	4.7	3.9	2.0	1.7
VXF12	22.5	16.7	23.9	13.4	17.1	4.6	2.3	20.4	20.7	0.375	0.750	5.1	10.8	4.7	9.2	13.4	4.3	4.7	3.9	2.0	1.7
VXF16	25.4	20.3	24.1	17.1	17.1	4.2	2.9	23.3	20.9	0.375	0.750	5.8	11.6	4.6	12.9	17.9	3.7	5.0	3.5	2.0	1.9
VXF20	25.4	24.2	24.1	17.1	17.1	4.2	2.9	23.3	20.9	0.375	0.750	5.7	14.4	3.6	12.2	19.9	3.6	3.6	3.5	2.0	2.2

PRODUCT INFORMATION IS SUBJECT TO CHANGE WITHOUT NOTICE

JOB NAME	JOB #	BUYER	BUYER #	LOCATION	DRAWING NO. <b>VXF-100</b>	REV <b>A</b>
----------	-------	-------	---------	----------	-------------------------------	-----------------

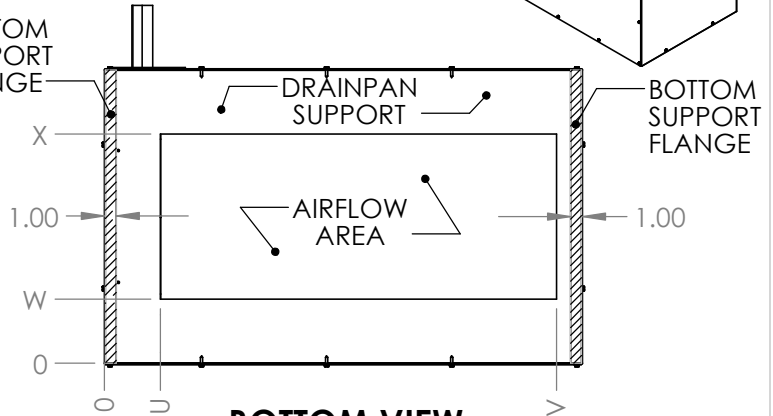
DWG LOC/NAME: VXF-100.SLDDRW

**V-SERIES COIL  
SIZES 30 AND 40  
(7.5 AND 10 TONS)**



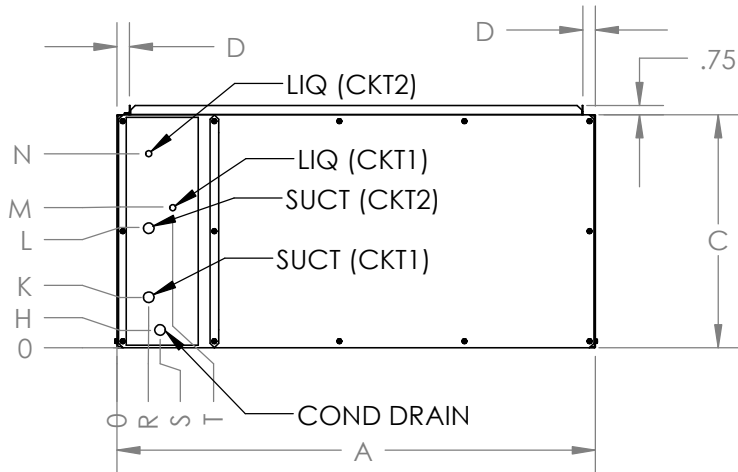
**TOP VIEW**

BOTTOM  
SUPPORT  
FLANGE

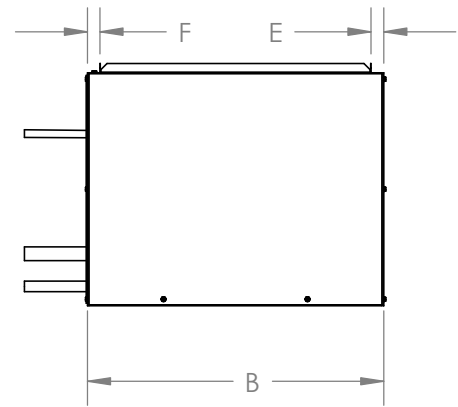


**BOTTOM VIEW**

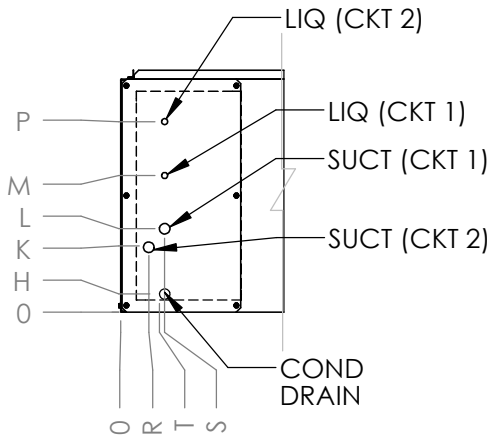
NOTE: BOTTOM FLANGES ARE APPROX 1INCH BELOW DRAINPAN SUPPORT.



**FRONT VIEW**



**RIGHT SIDE  
VIEW**



**FRONT VIEW  
(SIZE 40 ONLY)**

MODEL	A	B	C	D	E	F
VXFA30	39.9	24.7	19.4	1.0	1.1	1.0
VXFA40	52.1	24.7	19.4	1.0	1.0	1.0

MODEL	H	K	L	M	N	P	R	S	T
VXFA30-single ckt	1.6	4.3	N/A	11.7	N/A	N/A	1.7	2.7	3.6
VXFA30-dual ckt	1.6	4.3	10.0	11.7	14.3	N/A	1.7	2.7	3.6
VXFA40	1.6	5.5	7.0	11.4	N/A	15.9	1.3	2.2	2.2

VXFA30	4.7	37.7	5.5	19.2
VXFA40	4.4	49.4	6.3	18.3

MODEL	CONNECTION SIZES (O.D.)				
	DX-CKT #1		DX-CKT #2		COND DRAIN
	LIQ	SUCT	LIQ	SUCT	
VXFA30-single ckt	5/8"	1-1/8"	-	-	7/8"
VXFA40-single ckt	-	-	-	-	7/8"
VXFA30-dual ckt	1/2"	7/8"	1/2"	7/8"	7/8"
VXFA40-dual ckt	1/2"	7/8"	1/2"	7/8"	7/8"

CODE NO.  
CATALOG NO.

**Magic Aire®**

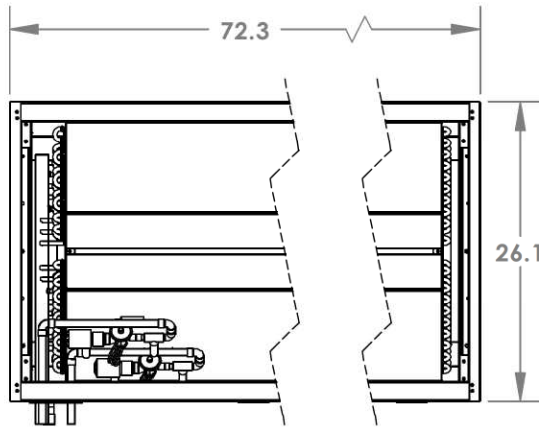
THIS DOCUMENT IS THE PROPERTY OF UNITED ELECTRIC CO. LP AND IS DELIVERED UPON THE EXPRESS CONDITION THAT THE CONTENTS WILL NOT BE DISCLOSED OR USED WITHOUT UNITED ELECTRIC CO. LP'S WRITTEN CONSENT.

SUBMISSION OF THESE DRAWINGS OR DOCUMENTS DOES NOT CONSTITUTE PART PERFORMANCE OR ACCEPTANCE OF CONTRACT.

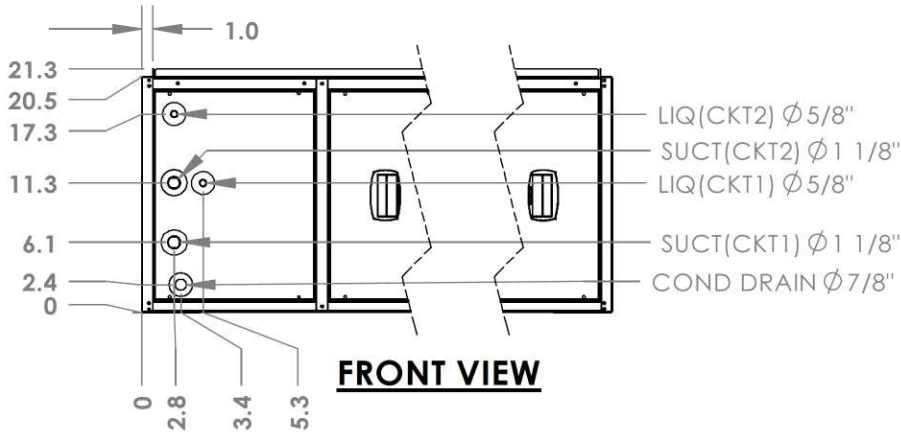
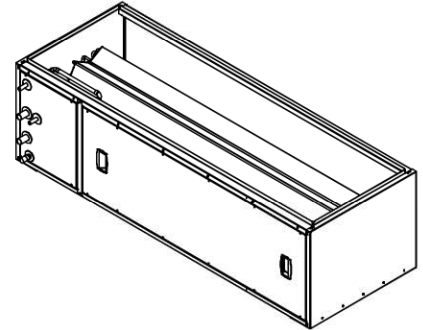
**V-SERIES  
COIL AND CABINET**

**VXF**

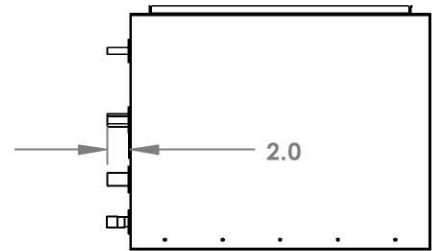
**V-SERIES COIL  
SIZE 60  
(15 TONS)**



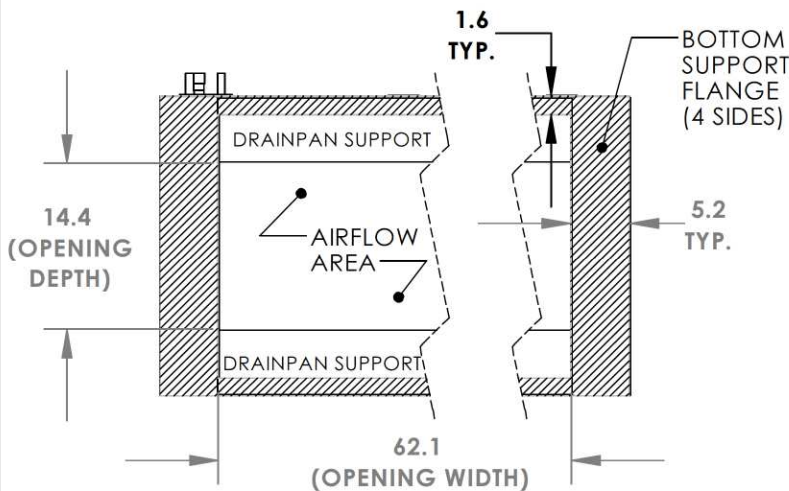
**TOP VIEW**



**FRONT VIEW**



**RIGHT SIDE VIEW**



**BOTTOM VIEW**

NOTE: DRAINPAN SUPPORT IS APPROX 1 INCH ABOVE BOTTOM SUPPORT FLANGE.

**NOTES:**

1. CONNECTION SIZES ARE INCHES, O.D.
2. "CKT" = DX COIL CIRCUIT.
3. "CKT1" REFERS TO FIRST CIRCUIT, BOTTOM HALVES OF FIN BLOCKS.
4. "CKT2" REFERS TO SECOND CIRCUIT, TOP HALVES OF FIN BLOCKS

PRODUCT INFORMATION IS SUBJECT TO CHANGE WITHOUT NOTICE

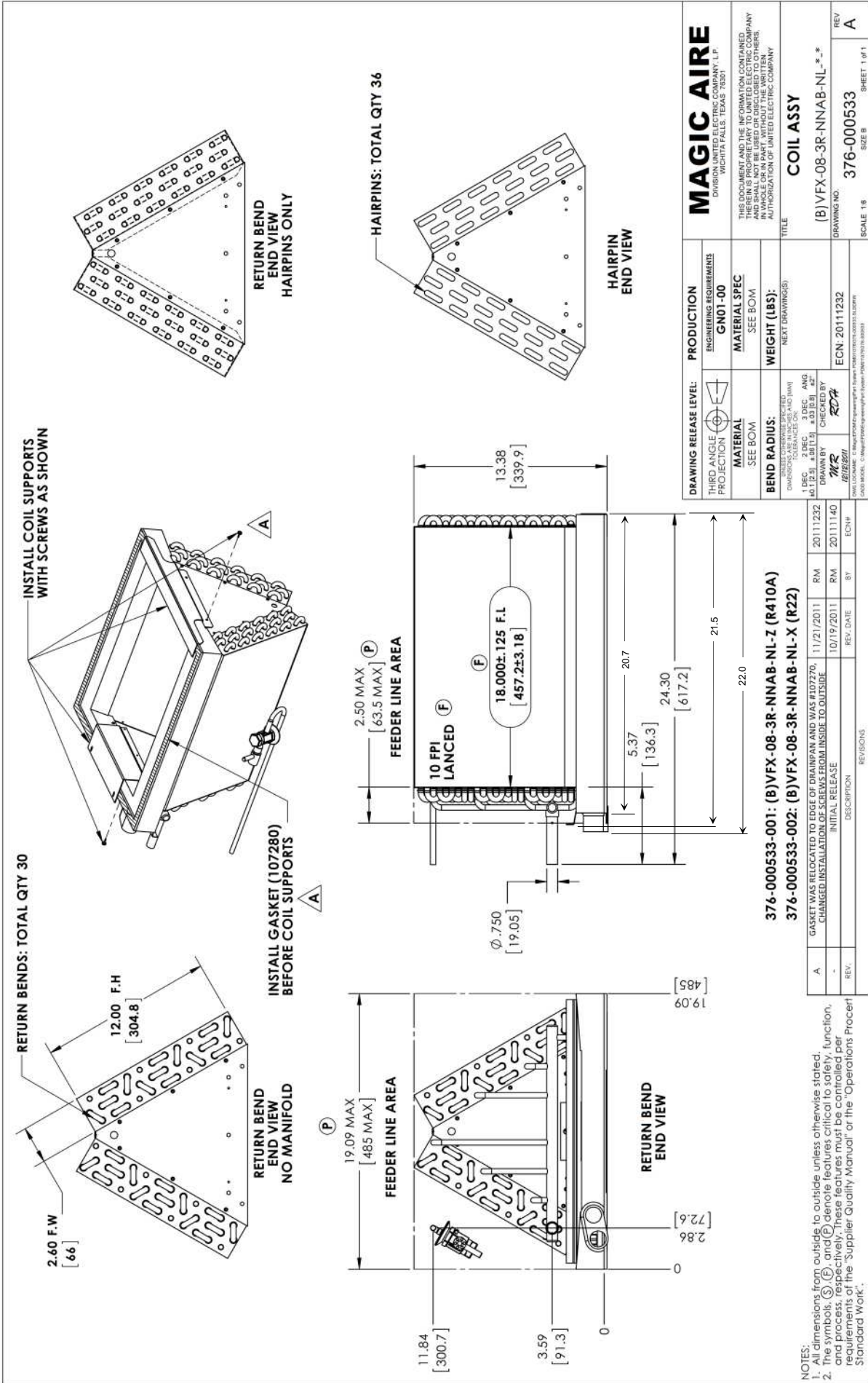
JOB NAME	JOB #	BUYER	BUYER #	LOCATION	J:\Sales\Product Management\PM SolidWorks\V-Series\VXEA60\ V-SERIES SUBMITTAL 60 7-16-12.SLDDRW	DRAWING NO.	V-SERIES SUBMITTAL 7-16-12	REV	A
----------	-------	-------	---------	----------	---	-------------	----------------------------	-----	---

# V-Series Coil Air Pressure Drop

		Model	Airflow (CFM)	APD (in. w.g.)
		<b>Hydronic Coil</b>	<b>VWF*08</b>	600
650	0.07			
700	0.08			
750	0.09			
800	0.10			
850	0.12			
900	0.13			
950	0.14			
1000	0.16			
<b>VWF*12</b>	900			0.13
	960	0.15		
	1020	0.17		
	1080	0.19		
	1140	0.21		
	1200	0.23		
	1260	0.25		
	1320	0.28		
	1380	0.31		
	1440	0.34		
<b>VWF*16</b>	1500	0.37		
	1200	0.13		
	1280	0.15		
	1360	0.17		
	1440	0.19		
	1520	0.21		
	1600	0.23		
	1680	0.25		
	1760	0.28		
	1840	0.31		
<b>VWF*20</b>	1920	0.34		
	2000	0.37		
	1500	0.13		
	1600	0.15		
	1700	0.17		
	1800	0.19		
	1900	0.21		
	2000	0.23		
	2100	0.25		
	2200	0.28		
<b>VWF*30</b>	2300	0.31		
	2400	0.34		
	2500	0.37		
	2250	0.14		
	2400	0.16		
	2550	0.17		
	2700	0.19		
	2850	0.22		
	3000	0.24		
	3150	0.27		
<b>VWF*40</b>	3300	0.29		
	3450	0.32		
	3600	0.35		
	3750	0.38		
	3000	0.15		
	3200	0.18		
	3400	0.20		
	3600	0.22		
	3800	0.25		
	4000	0.28		
	4200	0.30		
	4400	0.34		
	4600	0.37		
	4800	0.40		
	5000	0.44		

		Model	Airflow (CFM)	APD (in. w.g.)
		<b>R-410A and R-22 Direct Expansion Coils</b>	<b>VXF*08</b>	600
650	0.13			
700	0.14			
750	0.15			
800	0.17			
850	0.18			
900	0.20			
950	0.21			
1000	0.22			
<b>VXF*12</b>	900			0.22
	960	0.24		
	1020	0.27		
	1080	0.29		
	1140	0.32		
	1200	0.34		
	1260	0.37		
	1320	0.39		
	1380	0.42		
	1440	0.45		
<b>VXF*16</b>	1500	0.48		
	1200	0.22		
	1280	0.24		
	1360	0.27		
	1440	0.29		
	1520	0.32		
	1600	0.34		
	1680	0.37		
	1760	0.39		
	1840	0.42		
<b>VXF*20</b>	1920	0.45		
	2000	0.48		
	1500	0.22		
	1600	0.24		
	1700	0.27		
	1800	0.29		
	1900	0.32		
	2000	0.34		
	2100	0.37		
	2200	0.39		
<b>VXF*30</b>	2300	0.42		
	2400	0.45		
	2500	0.48		
	2250	0.23		
	2400	0.25		
	2550	0.28		
	2700	0.30		
	2850	0.33		
	3000	0.35		
	3150	0.38		
<b>VXF*40</b>	3300	0.41		
	3450	0.44		
	3600	0.47		
	3750	0.50		
	3000	0.25		
	3200	0.28		
	3400	0.30		
	3600	0.33		
	3800	0.36		
	4000	0.39		
<b>VXF*60</b>	4200	0.42		
	4400	0.45		
	4600	0.48		
	4800	0.52		
	5000	0.55		
	4500	0.25		
	4800	0.27		
	5100	0.30		
	5400	0.33		
	5700	0.36		
6000	0.38			
6300	0.41			
6600	0.44			
6900	0.48			
7200	0.51			
7500	0.54			

**NOTES:**  
 1. All Air Pressure Drop (APD) values are in inches w.g.  
 2. Pressure drops are with dry coil.



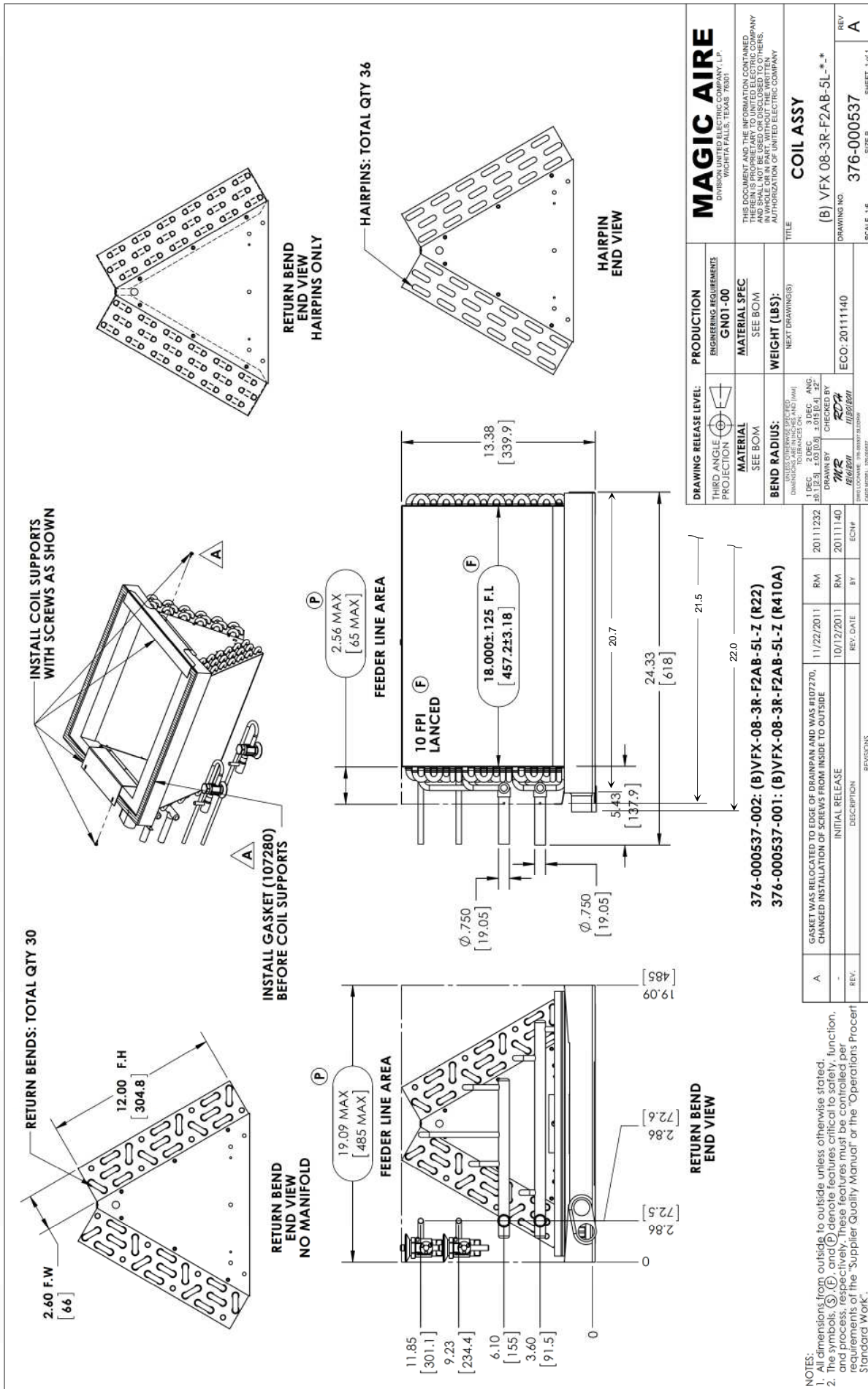
<b>MAGIC AIRE</b> DIVISION UNITED ELECTRIC COMPANY, L.P. WICHITA FALLS, TEXAS 76781		<b>ENGINEERING REQUIREMENTS</b> GN01-00	<b>PRODUCTION</b>
THIS DOCUMENT AND THE INFORMATION CONTAINED HEREIN IS PROPRIETARY TO UNITED ELECTRIC COMPANY AND IS NOT TO BE REPRODUCED, COPIED, OR TRANSMITTED IN ANY FORM OR BY ANY MEANS, WITHOUT THE WRITTEN AUTHORIZATION OF UNITED ELECTRIC COMPANY.		<b>MATERIAL SPEC</b> SEE BOM	<b>WEIGHT (LBS):</b> NEXT DRAWING(S)
<b>TITLE</b> COIL ASSY		<b>MATERIAL</b> SEE BOM	<b>THIRD ANGLE PROJECTION</b>
<b>REV</b> A		<b>DRAWN BY</b> MR. [Signature]	<b>CHECKED BY</b> RCA
<b>DRAWING NO.</b> 376-000533		<b>BEND RADIUS:</b> 1.000 INCHES (AND W/) 1.000 INCHES (AND W/) 1.000 INCHES (AND W/)	<b>ECN:</b> 20111232
<b>SCALE</b> 1:1		<b>DATE LOCATED:</b> 0: MagiAire Engineering Team 10/19/2011 10:30:11 AM	<b>REV. DATE</b> BY ECN
<b>SHEET</b> 1 of 1		<b>SIZE</b> B	<b>DESCRIPTION</b>

376-000533-001: (B)VFX-08-3R-NNAB-NL-Z (R410A)  
 376-000533-002: (B)VFX-08-3R-NNAB-NL-X (R22)  
 GASKET WAS RELOCATED TO EDGE OF DRAINPAN AND WAS #107270, 11/21/2011  
 CHANGED INSTALLATION OF SCREWS FROM INSIDE TO OUTSIDE

REV.	DESCRIPTION	REV. DATE	BY	ECN#
A	GASKET WAS RELOCATED TO EDGE OF DRAINPAN AND WAS #107270, 11/21/2011	11/21/2011	RM	20111232
-	CHANGED INSTALLATION OF SCREWS FROM INSIDE TO OUTSIDE	10/19/2011	RM	20111140

NOTES:  
 1. All dimensions from outside to outside unless otherwise stated.  
 2. All typeset, 0.0005 inch increments. All dimensions are controlled per requirements of the "Supplier Quality Manual" or the "Operations Procert Standard Work".

**VXFB08B COIL**



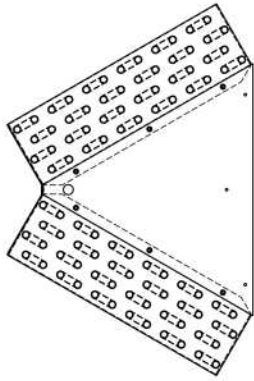
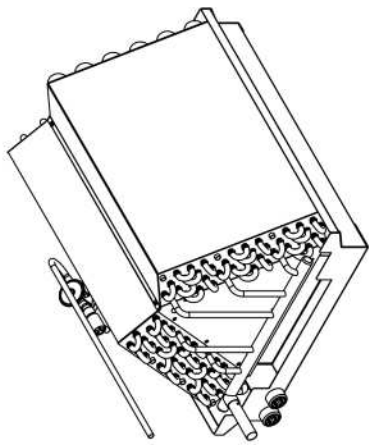
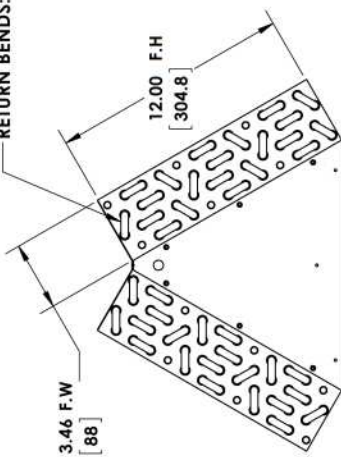
NOTES:

- All dimensions from outside to outside unless otherwise stated.
- The symbols (S), (E), and (P) denote features critical to safety, function, and process, respectively. These features must be controlled per requirements of the "Supplier Quality Manual" or the "Operations Procert Standard Work".

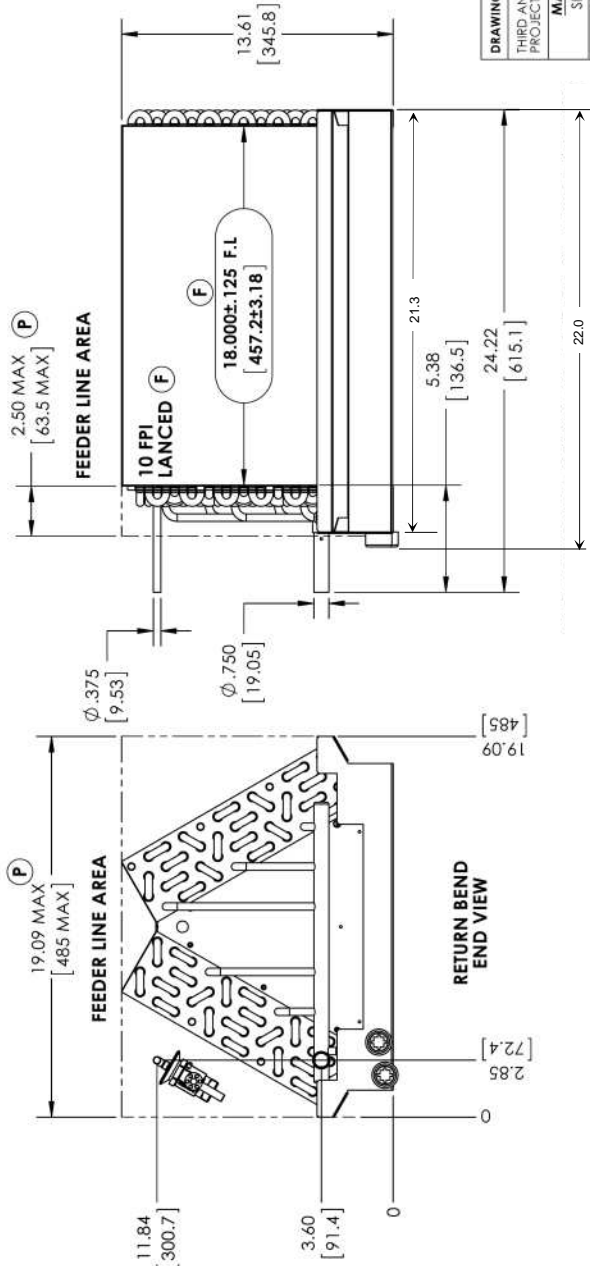
A	GASKET WAS RELOCATED TO EDGE OF DRAINPAN AND WAS #107270, CHANGED INSTALLATION OF SCREWS FROM INSIDE TO OUTSIDE	RM	11/22/2011	20111232
-	INITIAL RELEASE	RM	10/12/2011	20111140
REV.	DESCRIPTION	BY	REV. DATE	ECN#

# VXFB08C COIL

RETURN BENDS: TOTAL QTY 42



HAIRPIN  
END VIEW



HAIRPIN  
END VIEW

HAIRPINS: TOTAL QTY 48

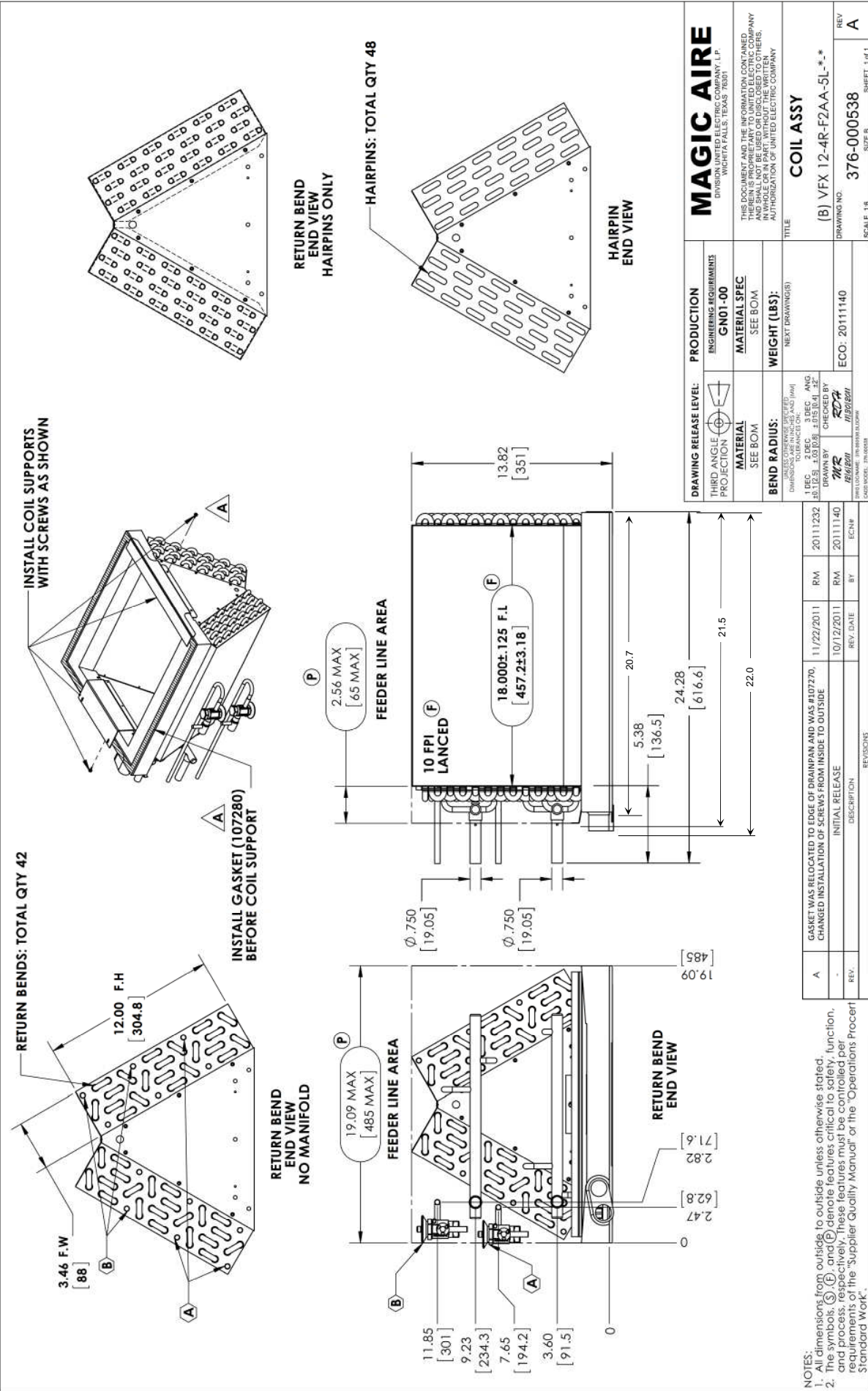
DRAWING RELEASE LEVEL: THIRD ANGLE PROJECTION	ENGINEERING REQUIREMENTS GN01-00	PRODUCTION	<b>MAGIC AIRE</b> DIVISION UNITED ELECTRIC COMPANY, L.P. WICHITA FALLS, TEXAS 76781
MATERIAL SEE BOM	MATERIAL SPEC SEE BOM		
BEND RADIUS: DRAWING OPERATIONS AND MARKING DEPARTMENT 15.5 [392.7] (MIN) 18.0 [457.2] (MAX) 40 [1016.1] (MIN) 43.0 [1091.4] (MAX)	WEIGHT (LBS): NEAT DRAWING(S)		TITLE <b>COIL ASSY</b>
DRAWN BY: RJA	CHECKED BY: TJA	ECO: 20120215	(B) VFX-12-4R-NNAD-NL-L-SSDP
DATE LOCATED: 20-01-16 08:00	DWG. NO. MODEL: 20-01-16		DRAWING NO: 376-001100
			SCALE 1:6
			REV. -
			SHEET 1 of 1

NOTES:  
1. All dimensions from outside to outside unless otherwise stated.  
2. The symbols (E), (F), and (P) denote features critical to safety, function, and process, respectively. These features must be controlled per requirements of the 'Supplier Quality Manual' or the 'Operations Proccet Standard Work'.

REV.	DESCRIPTION	REVISIONS	INITIAL RELEASE	REV. DATE	BY	ECN#
-			8/17/2012		ROH	20120215

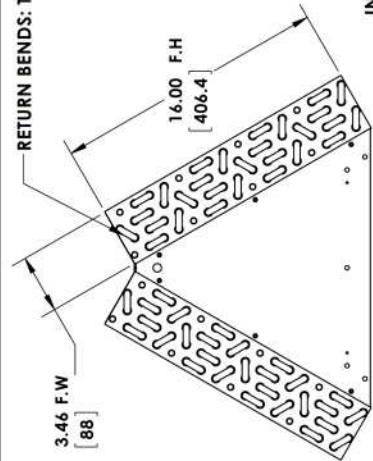
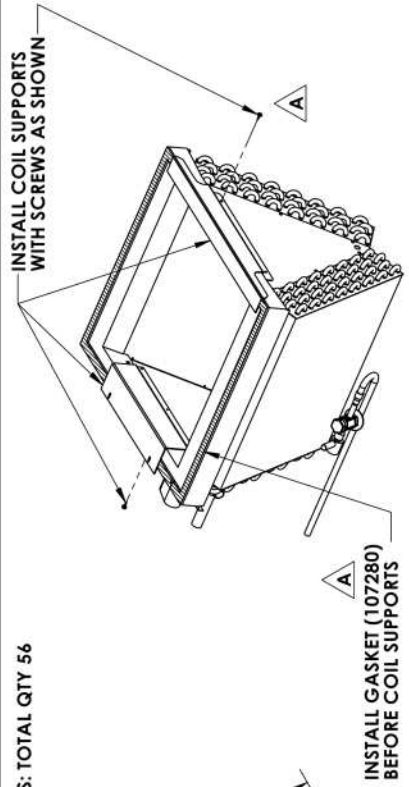
VXFB12B COIL



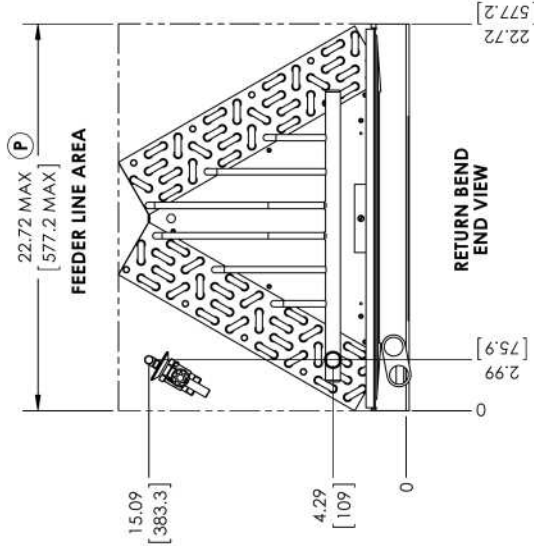


# VXFB12C COIL

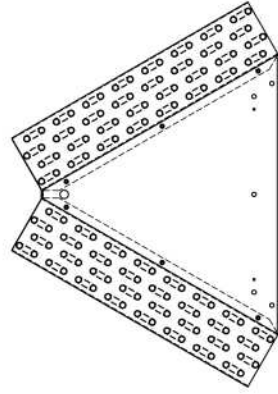
RETURN BENDS: TOTAL QTY 56



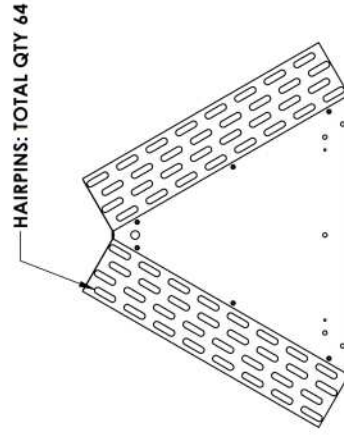
RETURN BEND END VIEW NO MANIFOLD



RETURN BEND END VIEW



RETURN BEND END VIEW HAIRPINS ONLY



HAIRPIN END VIEW

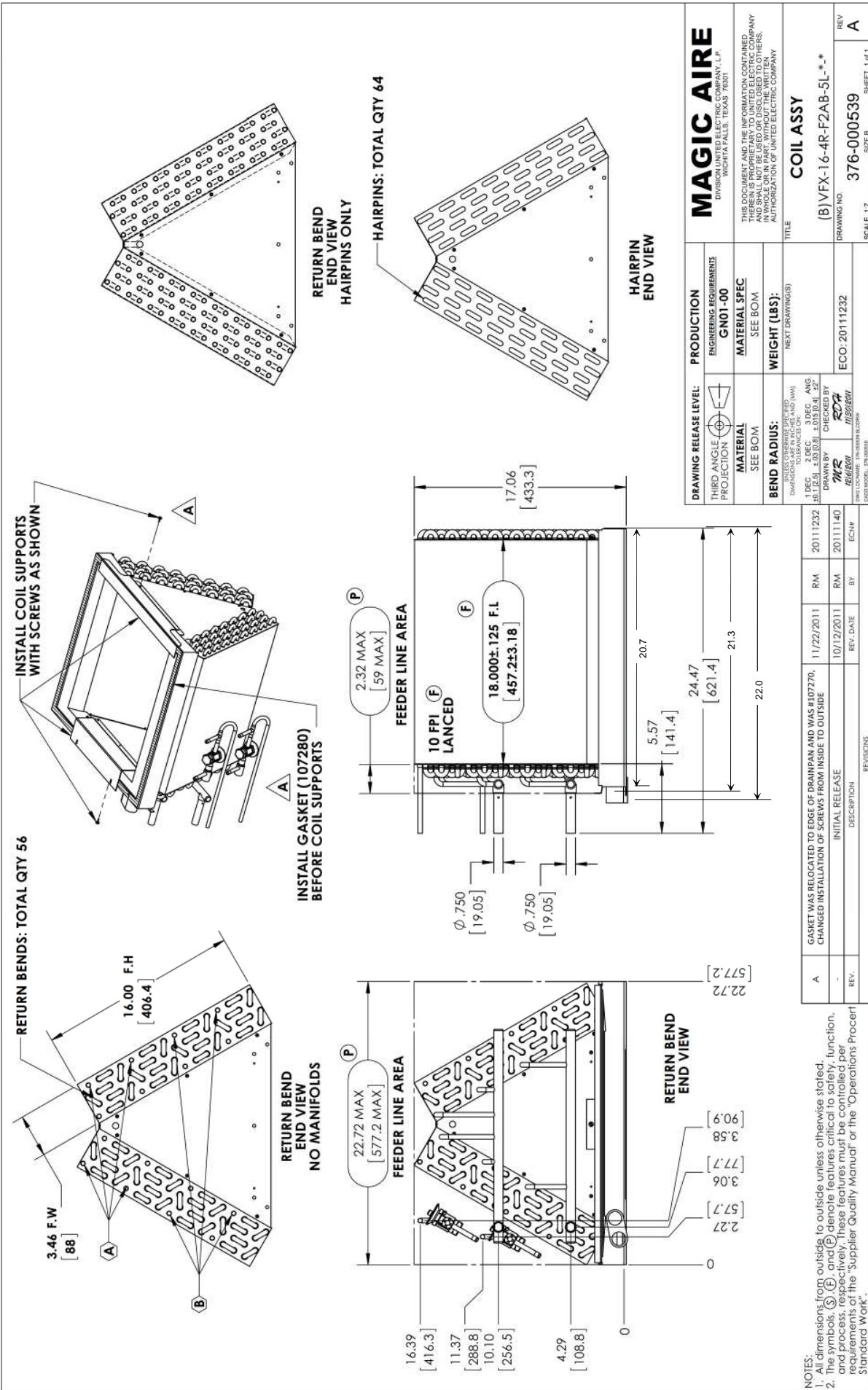
NOTES:  
 1. All dimensions from outside to outside unless otherwise stated.  
 2. The symbols (S), (F), and (P) denote features critical to safety, function, and process, respectively. These features must be controlled per requirements of the "Supplier Quality Manual" or the "Operations Procent Standard Work".

<b>DRAWING RELEASE LEVEL:</b>	<b>PRODUCTION</b>	<b>MAGIC AIRE</b> DIVISION OF UNITED ELECTRIC COMPANY WICHITA FALLS, TEXAS 76701
THIRD ANGLE PROJECTION	ENGINEERING REQUIREMENTS GNO1-00	
<b>MATERIAL</b>	<b>MATERIAL SPEC</b>	THIS DOCUMENT AND THE INFORMATION CONTAINED HEREIN IS UNCLASSIFIED EXCEPT WHERE SHOWN OTHERWISE AND SHALL NOT BE USED OR DISCLOSED TO OTHERS WITHOUT THE WRITTEN AUTHORIZATION OF UNITED ELECTRIC COMPANY
SEE BOM	SEE BOM	
<b>BEND RADIUS:</b>	<b>WEIGHT (LBS):</b>	<b>TITLE</b>
MINIMUM BEND RADIUS (MIN) AND MAXIMUM BEND RADIUS (MAX)	NEXT DRAWING(S)	<b>COIL ASSY</b>
1 DEC 2 DEC 3 DEC ANG. ±0.12 (S) ±0.03 (D) ±0.015 (F) ±2°		(B)VFX-16-4R-NNAE-NL-**-*
<b>DRAWN BY:</b>	<b>CHECKED BY:</b>	<b>DRAWING NO.</b>
MR	MSA	ECO. 20111232
DATE: 10/5/2011	DATE: 11/21/2011	SCALE: 1:1
DESIGN: 107280	DESIGN: 107280	
CHG MODEL: 107280		

REV.	DESCRIPTION	REV. DATE	BY	ECNP
A	GASKET WAS RELOCATED TO EDGE OF DRAINPAN AND WAS #107270, CHANGED INSTALLATION OF SCREWS FROM INSIDE TO OUTSIDE	11/21/2011	RM	20111232
-	INITIAL RELEASE	10/5/2011	MR	20111140

REVISIONS:

VXFB16B COIL

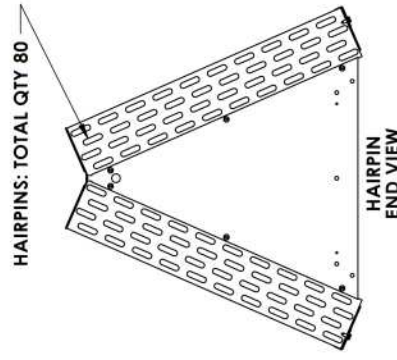
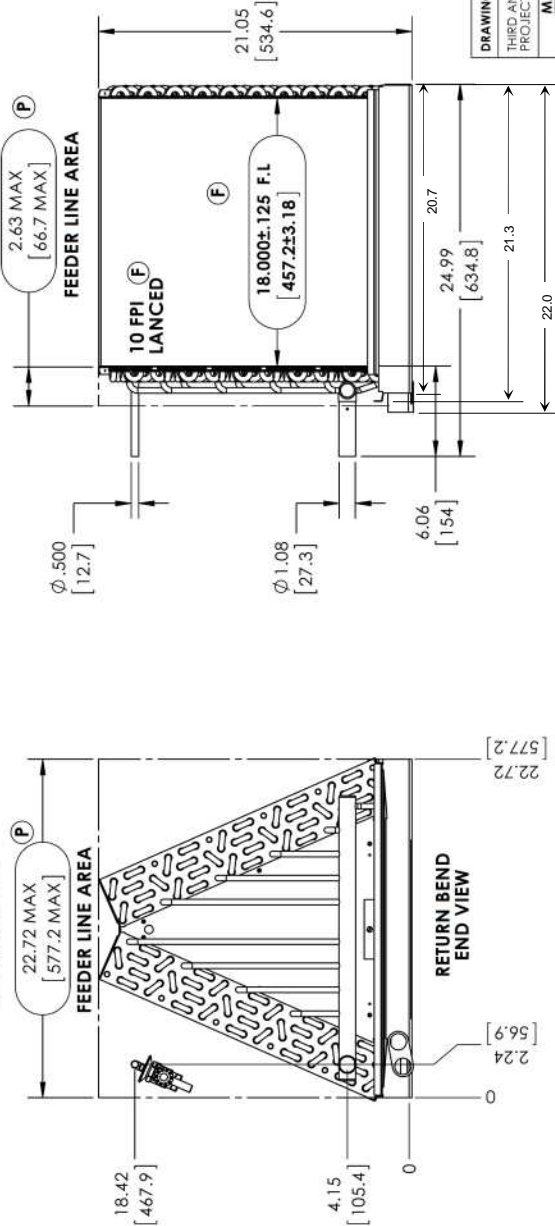
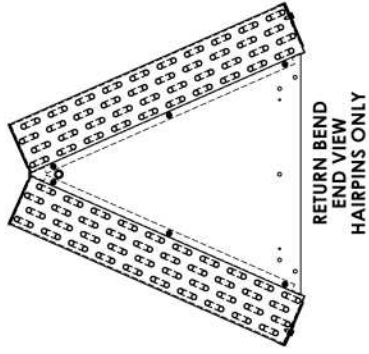
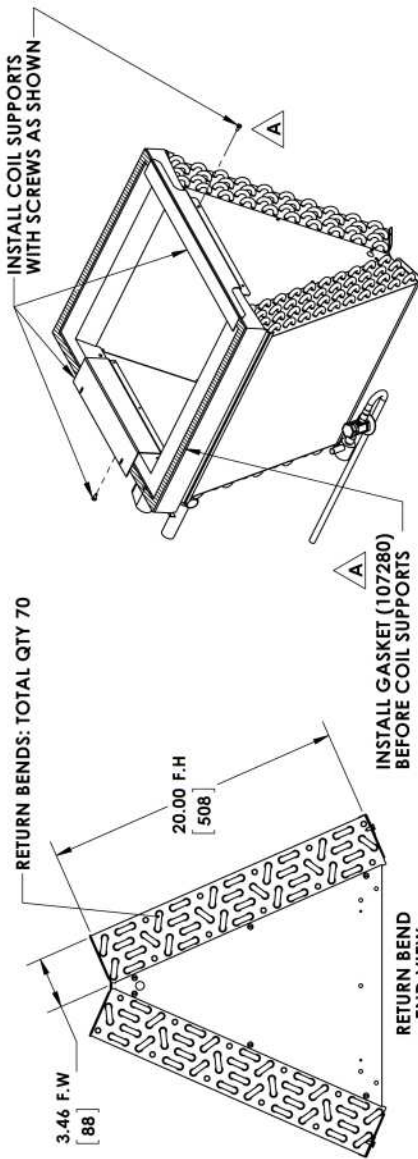


NOTES:  
 1. Dimensions from outside to outside unless otherwise stated.  
 2. The (A), (B), (C), (D), (E), (F) callouts refer to the function, form, fit, and process, respectively. These features must be controlled per requirements of the "Supplier Quality Manual" or the "Operations Proccent Standard Work".

<b>DRAWING RELEASE LEVEL:</b>	<b>PRODUCTION</b>
<b>THIRD ANGLE PROJECTION</b>	<b>ENGINEERING REQUIREMENTS</b>
<b>MATERIAL</b>	<b>GNO1-00</b>
<b>SEE BOM</b>	<b>MATERIAL SPEC</b>
<b>SEE BOM</b>	<b>SEE BOM</b>
<b>BEND RADIUS:</b>	<b>WEIGHT (LBS):</b>
<b>SEE BOM</b>	<b>NEXT DRAWING(S)</b>
<b>TITLE</b>	<b>MAGIC AIRE</b>
<b>DIVISION UNITED ELECTRIC COMPANY, L.P.</b>	<b>MOHAWK FALLS, TEXAS 75851</b>
<b>THIS DOCUMENT AND THE INFORMATION CONTAINED HEREIN IS UNCLASSIFIED EXCEPT WHERE SHOWN OTHERWISE AND IS NOT BE RELEASED OR DISCLOSED TO THE COMPANY IN WHOLE OR IN PART, WITHOUT THE WRITTEN AUTHORIZATION OF UNITED ELECTRIC COMPANY.</b>	<b>COIL ASSY</b>
<b>(B)VFX-16-4R-F2A-B-5L-**-*</b>	<b>DRAWING NO.</b>
<b>ECO: 20111232</b>	<b>376-000539</b>
<b>SCALE 1:1</b>	<b>SHEET 1 of 1</b>

**VXFB16C COIL**

RETURN BENDS: TOTAL QTY 70



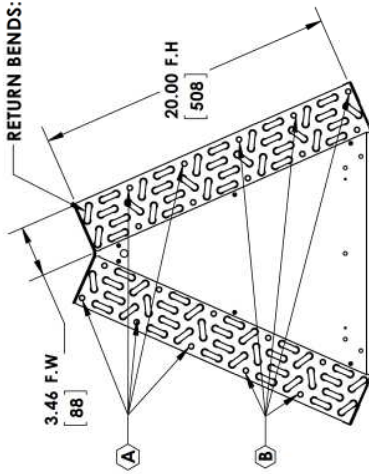
DRAWING RELEASE LEVEL: THIRD ANGLE PROJECTION	ENGINEERING REQUIREMENTS	<b>MAGIC AIRE</b> DIVISION UNITED ELECTRIC COMPANY, L.P. WICHITA FALLS, TEXAS 76781	
	MATERIAL	THIS DOCUMENT AND THE INFORMATION CONTAINED HEREIN IS PROPRIETARY TO UNITED ELECTRIC COMPANY AND IS TO BE KEPT CONFIDENTIAL AND NOT REPRODUCED IN WHOLE OR IN PART, WITHOUT THE WRITTEN AUTHORIZATION OF UNITED ELECTRIC COMPANY	
	SEE BOM	MATERIAL SPEC	TITLE
	SEE BOM	SEE BOM	COIL ASSY
	SEE BOM	WEIGHT (LBS):	(B) VFX-20-4R-NNAF-NL-**-*
	SEE BOM	NEAT DRAWINGS)	DRAWING NO:
	SEE BOM		ECO: 20111232
	SEE BOM		SCALE 1:5
	SEE BOM		SHEET 1 of 1
	SEE BOM		REV A

REV.	DESCRIPTION	REV. DATE	BY	ECN#	REVISIONS
A	GASKET WAS RELOCATED TO EDGE OF DRAINPAN AND WAS #107270; CHANGED INSTALLATION OF SCREWS FROM INSIDE TO OUTSIDE	11/22/2011	RM	20111232	
-	INITIAL RELEASE	10/5/2011	MR	20111140	
REV.					

NOTES:  
 1. All dimensions from outside to outside unless otherwise stated.  
 2. The symbols (S), (C), and (P) denote features critical to safety, function, and process, respectively. These features must be controlled per requirements in the 'Supplier Quality Manual' or the 'Operations Process Standard Work'.

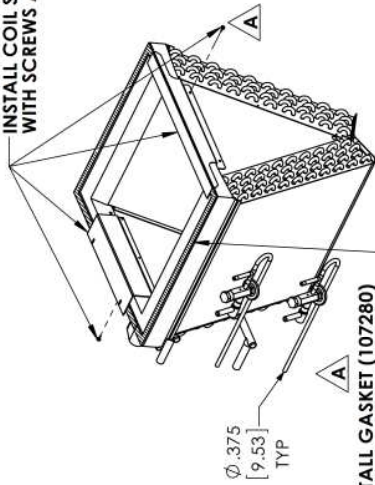
## VXFB20B COIL

RETURN BENDS: TOTAL QTY 70

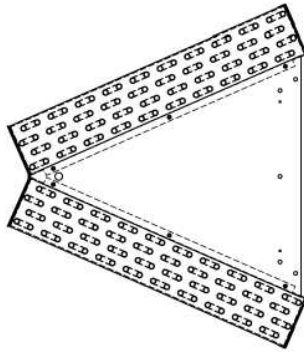


RETURN BEND  
END VIEW  
NO MANIFOLDS

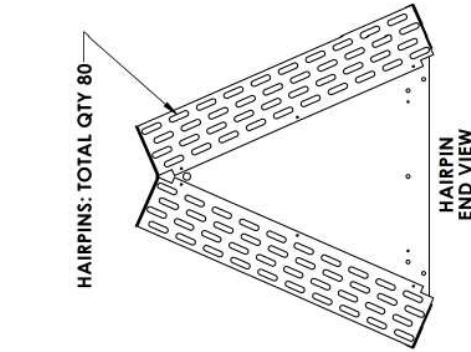
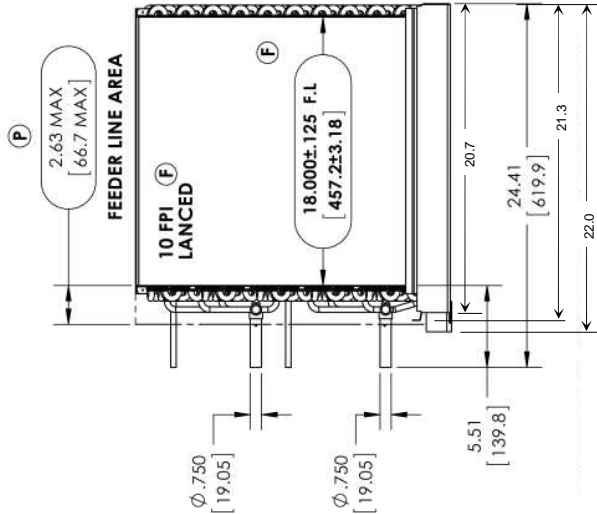
INSTALL COIL SUPPORTS  
WITH SCREWS AS SHOWN



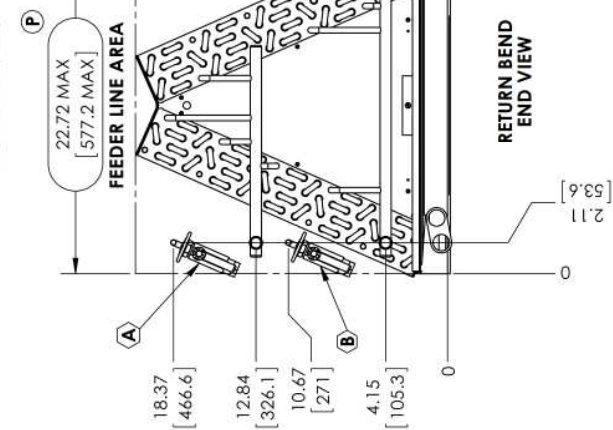
INSTALL GASKET (107280)  
BEFORE COIL SUPPORTS



RETURN BEND  
END VIEW  
HAIRPINS ONLY



HAIRPIN  
END VIEW



RETURN BEND  
END VIEW

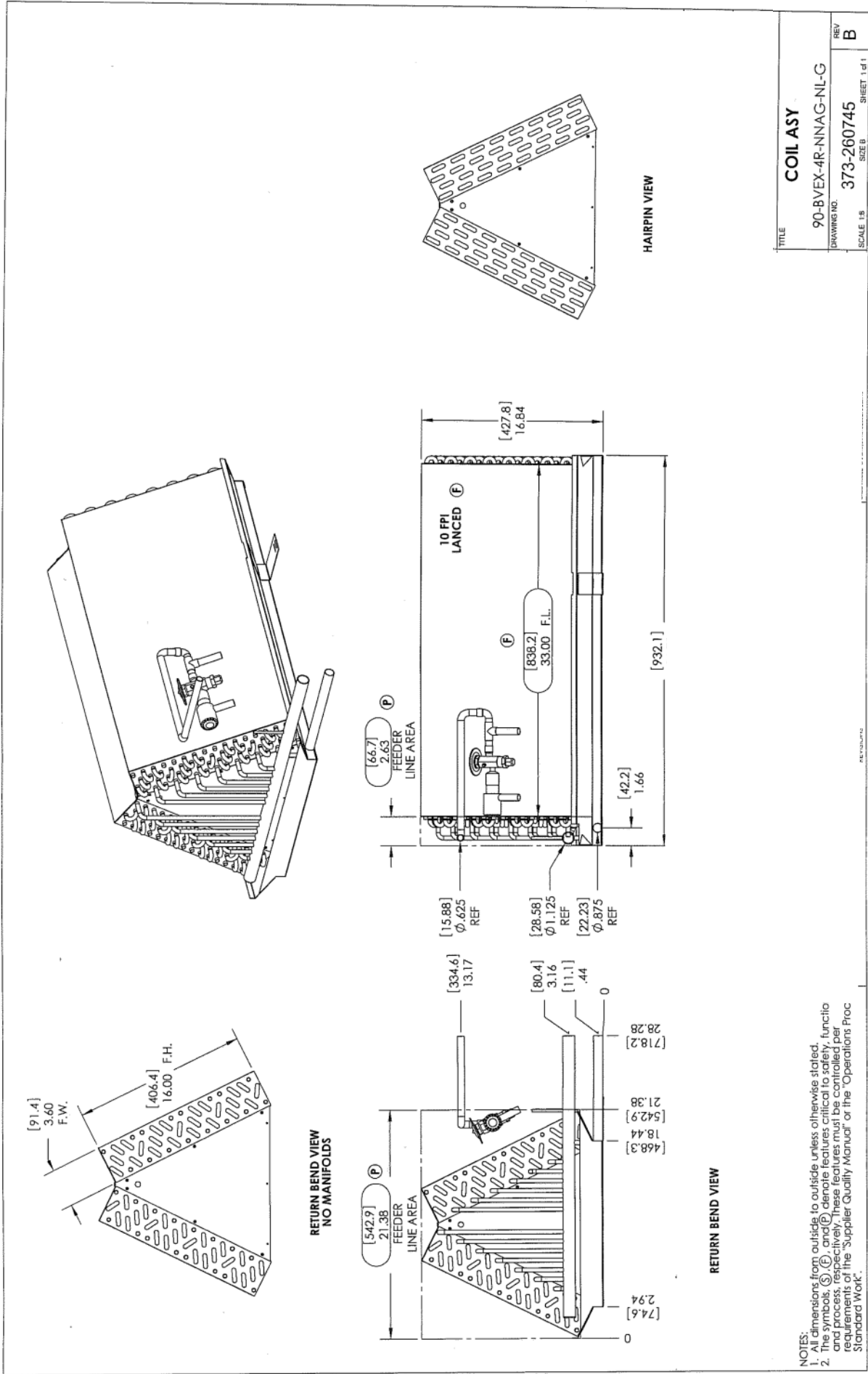
<b>DRAWING RELEASE LEVEL:</b>	<b>PRODUCTION</b>
THIRD ANGLE PROJECTION	ENGINEERING REQUIREMENTS
<b>MATERIAL</b>	GNO1-00
SEE BOM	<b>MATERIAL SPEC</b>
	SEE BOM
<b>BEND RADIUS: N/A</b>	<b>WEIGHT (LBS):</b>
(SEE OVERSHEET SPECIFIED DIMENSIONS FOR INCHES AND MM)	NEXT DRAWING(S)
1 DEC 2 DEC 3 DEC ANG	
10.12.03 ±.03(0.03) ±.015(0.4) 15°	
DRAWN BY <b>MR</b> CHECKED BY <b>RZA</b>	
DATE <b>10/20/2011</b> / <b>10/20/2011</b>	
ECO: 20111232	
SCALE: 1:1	
	<b>TITLE</b>
	<b>COIL ASSY</b>
	(B)VFX-20-4R-F2AD-5L-**-*
	DRAWING NO.
	376-000540
	SIZE: B
	SHEET 1 of 1

20111232	RM	20111232	RM
11/22/2011	BY	11/22/2011	BY
10/12/2011	REV. DATE	10/12/2011	REV. DATE
20111140	ECN#	20111140	ECN#
GASKET WAS RELOCATED TO EDGE OF DRAINPAN AND WAS #107270; CHANGED INSTALLATION OF SCREWS FROM INSIDE TO OUTSIDE.			
INITIAL RELEASE DESCRIPTION			
REV.	DESCRIPTION	REV. DATE	BY

NOTES:  
1. All dimensions from outside unless otherwise stated.  
2. The symbols (S), (E), and (P) denote features critical to safety, function, and process, respectively. These features must be controlled per requirements of the "Supplier Quality Manual" or the "Operations Process Standard Work".

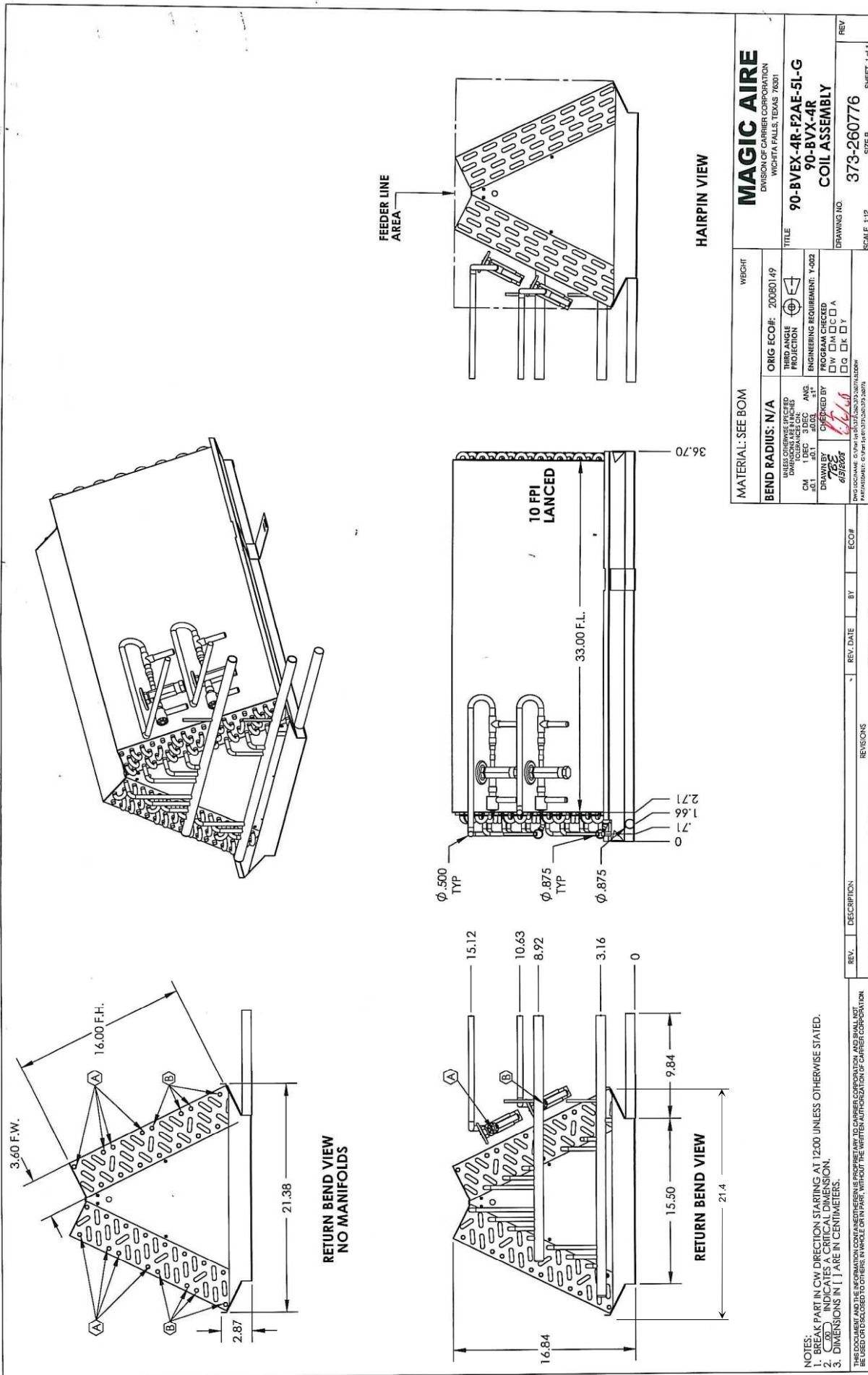
<b>MAGIC AIRE</b>	
DIVISION OF UNITED ELECTRIC COMPANY, L.P. WICHITA FALLS, TEXAS 79301	
THIS DOCUMENT AND THE INFORMATION CONTAINED HEREIN IS UNCLASSIFIED AND SHALL NOT BE USED OR DISCLOSED TO OTHERS WITHOUT THE WRITTEN AUTHORIZATION OF UNITED ELECTRIC COMPANY	

VXFB20C COIL



NOTES:  
 1. All dimensions from outside to outside unless otherwise stated.  
 2. The symbols (P), (F), and (R) refer to pressure, function, and reference points respectively. The symbols (Ø) and (F.L.) refer to diameter and face length respectively. The symbols (REF) and (F.W.) refer to reference and face width respectively. The symbols (F.H.) and (F.L.) refer to face height and face length respectively. The symbols (F) and (R) refer to function and reference points respectively. The symbols (Ø) and (F.L.) refer to diameter and face length respectively. The symbols (REF) and (F.W.) refer to reference and face width respectively. The symbols (F.H.) and (F.L.) refer to face height and face length respectively.

**VXFB30B COIL**



<b>MAGIC AIRE</b> DIVISION OF CARRIER CORPORATION WICHITA FALLS, TEXAS 76801		WEIGHT
TITLE <b>90-BVEX-4R-F2AE-5L-G</b> <b>90-BVX-4R</b> <b>COIL ASSEMBLY</b>		ORIG ECO#: 20080149
DRAWING NO. <b>373-260776</b>		REV
SCALE: 1/2		SHEET 1 of 1
MATERIAL: SEE BOM		BEND RADIUS: N/A
UNLESS OTHERWISE SPECIFIED DIMENSIONS ARE IN INCHES ANG. DIMENSIONS ARE IN DEGREES		FINISH: POLISHED
DRAWN BY: <i>[Signature]</i>		ENGINEERING REQUIREMENT: Y-002
CHECKED BY: <i>[Signature]</i>		PROGRAM CHECKED: <input type="checkbox"/> W <input type="checkbox"/> M <input type="checkbox"/> C <input type="checkbox"/> A
DATE: 06/26/88		<input type="checkbox"/> Q <input type="checkbox"/> R <input type="checkbox"/> T
PART NUMBER: 373-260776-0000		

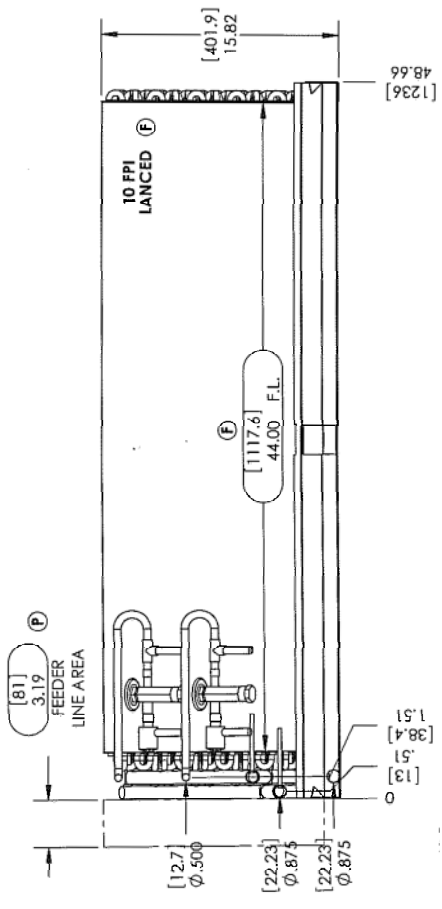
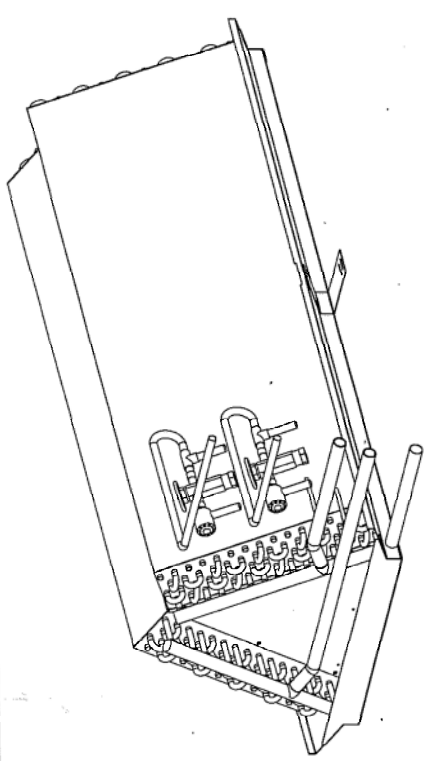
NOTES:  
 1. BREAK PART IN CW DIRECTION STARTING AT 1/200 UNLESS OTHERWISE STATED.  
 2. Ø INDICATES A CRITICAL DIMENSION.  
 3. DIMENSIONS IN [ ] ARE IN CENTIMETERS.

THIS DOCUMENT AND ITS CONTENTS ARE UNCLASSIFIED EXCEPT WHERE SHOWN OTHERWISE. IT IS THE PROPERTY OF CARRIER CORPORATION AND IS LOANED TO YOU. IT IS TO BE USED ONLY FOR THE PURPOSES AUTHORIZED BY THE WRITTEN AUTHORIZATION OF CARRIER CORPORATION. IT IS NOT TO BE REPRODUCED OR DISCLOSED TO OTHERS, IN WHOLE OR IN PART, WITHOUT THE WRITTEN AUTHORIZATION OF CARRIER CORPORATION.

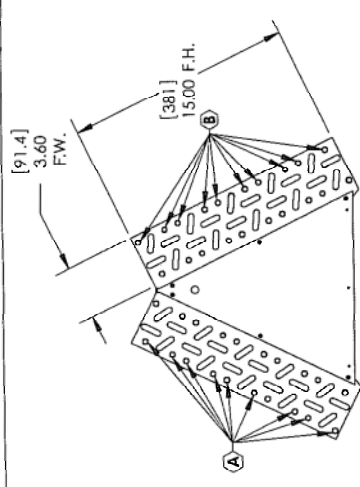
**VXFB30C COIL**

# VXFB40C COIL

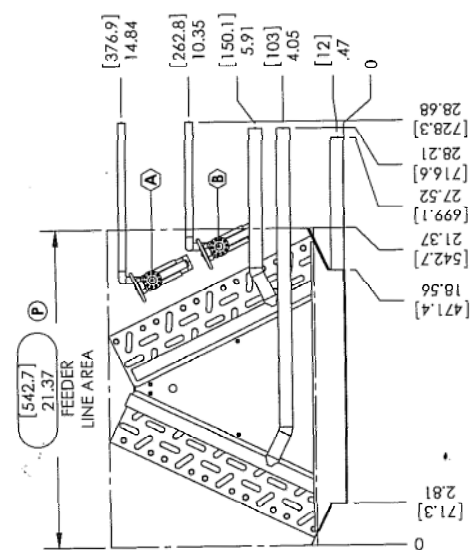
TITLE	COIL ASY
DRAWING NO.	120-BVEX-4R-F2AF-5L-G
SCALE	1:1
REV	A
SHEET	1 of 1



HAIRPIN VIEW



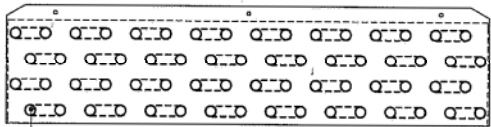
RETURN BEND VIEW  
NO MANIFOLDS



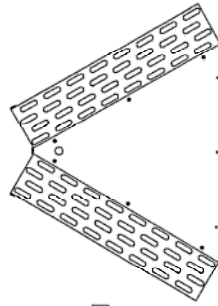
RETURN BEND VIEW

NOTES:  
 1. All dimensions from outside unless otherwise stated.  
 2. The symbols (S), (F), and (P) denote features critical to safety, function, and process, respectively. These features must be controlled per requirements of the "Supplier Quality Manual" or the "Operations Proccent Standard Work".



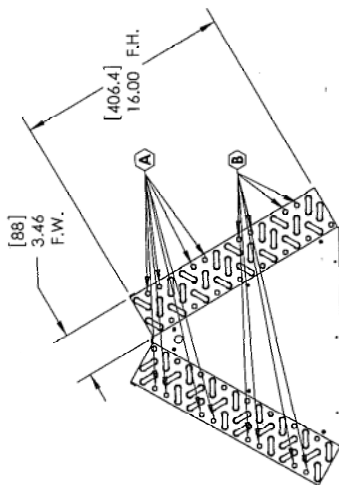
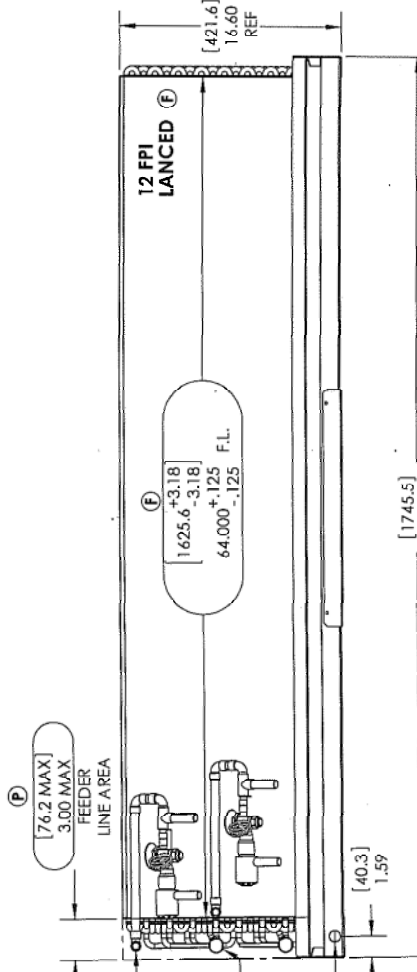
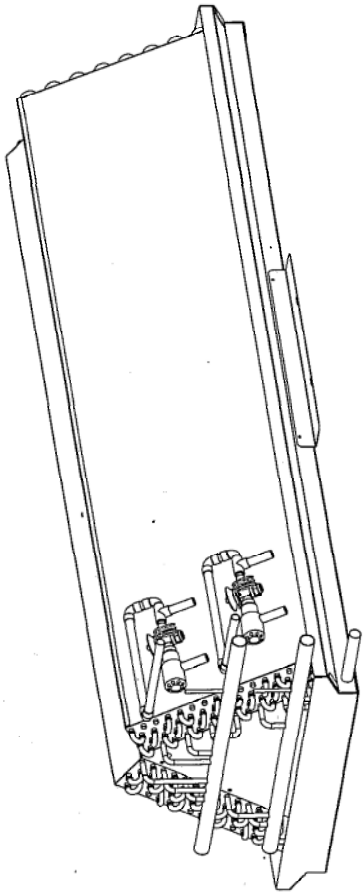


RETURN BEND VIEW  
HAIRPINS ONLY

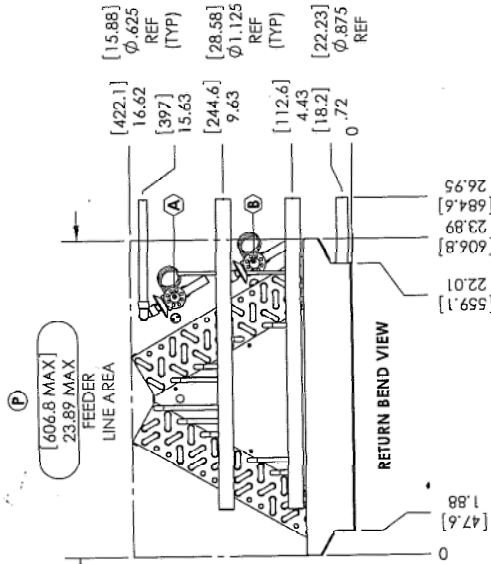


HAIRPIN VIEW

32



RETURN BEND VIEW  
NO MANIFOLDS



NOTES:  
1. All dimensions from outside unless otherwise stated.  
2. The symbols (S), (E) and (P) denote features critical to safety, function, interchangeability, or performance. These features must be controlled per requirements of the "Supplier Quality Manual" or the "Operations Procent Standard Work".

TITLE	COIL
DRAWING NO.	VEX-60-4R-F2AG-5L-Z
REV	B
SIZE	B
SHEET	1 of 1
DRAWING NO.	373-260973

# VXFB60C COIL